

ENSIGN DRAIN

Expansion Plug

ED074

DESCRIPTION

The expansion plug is an alternative method for capping off pipe or fitting spigot ends. The mechanical fixing compresses the plug into the ID of the pipe or fitting, to form a water-tight seal.

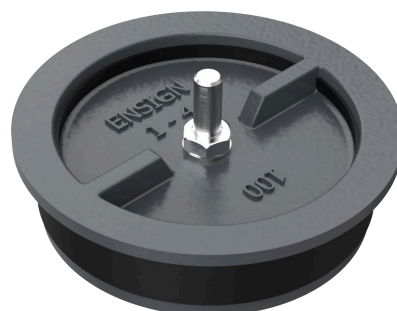
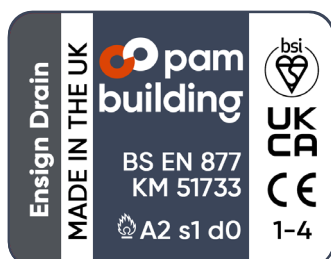
RECOMMENDED USE

- Domestic use
- Wastewater
- Rainwater
- Runoff water
- Hot effluents

STANDARDS & APPROVALS

- Industry product standard: BS EN 877
- Range fire classification: A2, s1, d0

IDENTIFICATION LABEL



MATERIALS & COATINGS

- Cast iron
- Internally and externally coated grey, powder epoxy resin coating, min. average thickness 150µm

TECHNICAL FEATURES

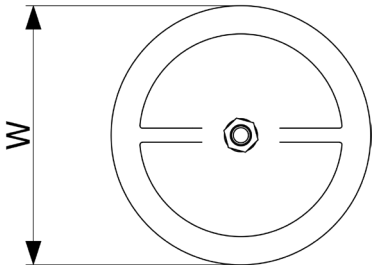
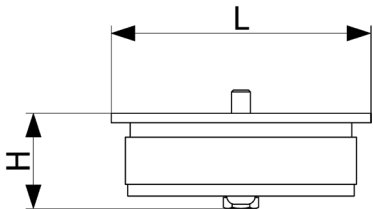
- Hot water resistance: 24hr @ 95°C
- Thermal cycle resistance: 1500 cycles between 15°C and 93°C
- Chemical resistance for $1 \leq \text{pH} \leq 13$, up to 80°C
- Salt spray resistance internal coating: more than 3000h
- Salt spray resistance external coating: more than 1500h

ENVIRONMENTAL DATA

- Percentage of recycled content: 99%
- Recycling information: Cast iron is 100% recyclable through the existing recycling industrial network.

Data source: Environmental Product Declaration S-P-02191

ENSIGN DRAIN
Expansion Plug
ED074



DN	L	H	W	WEIGHT (KG)	PRODUCT CODE
100	110	42	110	0.7	191823
150	158	42	158	1.5	191824

Accessories:

- 0.4l grey touch up paint – 216318
- Recommended couplings for connections - ED001/ED004/EC002HP
- For connection from Timesaver Drain to Ensign, please use the TD02 stepped coupling

This document is provided for information purposes, and our company reserves the right to modify the information contained herein at any time. Our company declines all responsibility of materials that do not comply with the rules prescribed in this document as well with the standards, the technical documents and the applicable professional standards. Any orders placed will be subject to our General Terms and Conditions of Sale, available on request. The drawings and/or images are the exclusive property of Pam Building and are confidential. They must not be reproduced or disclosed to any third party without written consent. They may only be used for the purpose for which they were issued and are returnable on request.