

ENSIGN SOIL

Double Branch 45°

EF010

DESCRIPTION

The double branch is designed to offer a double branch off connection to a stack whether it be soil, vent or rainwater use.

This product is designed and conforms to the design guidance of BS EN 12056-2.

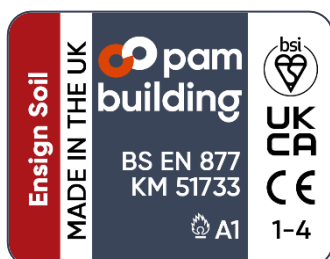
RECOMMENDED USE

- Domestic use
- Wastewater
- Rainwater
- Runoff water
- Hot effluents

STANDARDS & APPROVALS

- Industry product standard: BS EN 877
- Range fire classification: A1

IDENTIFICATION LABEL



MATERIALS & COATINGS

- Cast Iron
- Internally and externally coated red-brown, anti-corrosive epoxy powder coating, average thickness 150 µm internally and 70µm externally

TECHNICAL FEATURES

- Hot water resistance: 24hr @ 95°C
- Thermal cycle resistance: 1500 cycles between 15°C and 93°C
- Chemical resistance for 2>ph>12
- Salt spray resistance internal coating: more than 350hrs.

ENVIRONMENTAL DATA

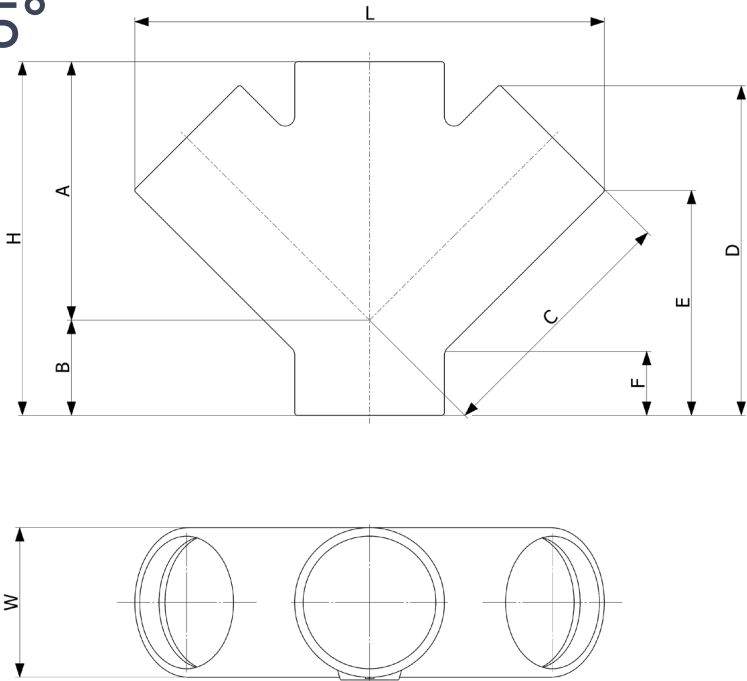
- Percentage of recycled content: 99%
- Recycling information: Cast Iron is 100% recyclable through the existing recycling industrial network.

Data source: Environmental Product Declaration S-P-02190

ENSIGN SOIL

Double Branch 45°

EF010



DN	L	H	W	A	B	C	D	E	F	WEIGHT (KG)	PRODUCT CODE
100x100	346	260	110	190	70	190	243	165	46	4.7	191509
150x100	394	280	160	225	55	225	252	174	54	8.0	191512
150x150	488	355	160	265	90	265	334	277	55	12.6	191513
200x200	627	455	210	340	115	340	428	280	67	25.3	191514

This document is provided for information purposes, and our company reserves the right to modify the information contained herein at any time. Our company declines all responsibility of materials that do not comply with the rules prescribed in this document as well with the standards, the technical documents and the applicable professional standards. Any orders placed will be subject to our General Terms and Conditions of Sale, available on request. The drawings and/or images are the exclusive property of Pam Building and are confidential. They must not be reproduced or disclosed to any third party without written consent. They may only be used for the purpose for which they were issued and are returnable on request.