



ENSIGN SOIL

Long Tail Single Radius Branch 88°

EF096

DESCRIPTION

The long tail single radius branch offers a single branch design for connecting a SVP stack to WC connections and jointless through slab penetration.

This product is designed and conforms to the design guidance of BS EN 12056-2.

The 4 x 50mm push-fit bosses can be hole sawed and used to connect low level waste connections.

RECOMMENDED USE

- Domestic use
- Wastewater
- Rainwater
- Runoff water
- Hot effluents

STANDARDS & APPROVALS

- Industry product standard: BS EN 877
- Range fire classification: A1

IDENTIFICATION LABEL



MATERIALS & COATINGS

- Cast Iron
- Internally and externally coated red-brown, anti-corrosive epoxy powder coating, average thickness 150 µm internally and 70µm externally

TECHNICAL FEATURES

- Hot water resistance: 24hr @ 95°C
- Thermal cycle resistance: 1500 cycles between 15°C and 93°C
- Chemical resistance for 2>ph>12
- Salt spray resistance internal coating: more than 350hrs.

ENVIRONMENTAL DATA

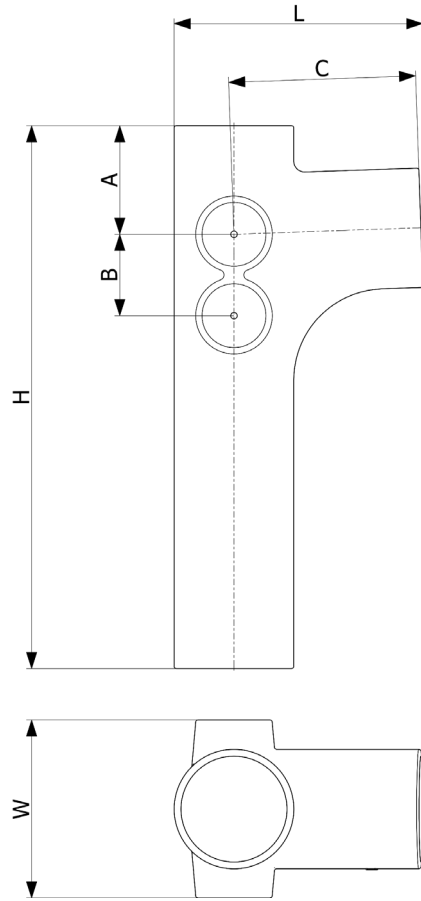
- Percentage of recycled content: 99%
- Recycling information: Cast Iron is 100% recyclable through the existing recycling industrial network.

Data source: Environmental Product Declaration S-P-02190

ENSIGN SOIL

Long Tail Single Radius Branch 88°

EF096



DN	L	H	W	A	B	C	WEIGHT (KG)	PRODUCT CODE
100x100	229	500	164	100	75	172	9.9	208644
150x100	280	700	220	114	75	200	17.9	291015



- Plastic moulded plug to blank off boss pipes (supplied separately in bags of 10). Product code: 192255



- Rubber grommets to connect to 54mm OD copper or 56mm OD UPVC waste (supplied separately in bags of 10). Product code: 208205.



- 51mm Hole saw for boss connection cut-out. Product code: 208206



- Hole saw arbour with drill. Product code: 192327

This document is provided for information purposes, and our company reserves the right to modify the information contained herein at any time. Our company declines all responsibility of materials that do not comply with the rules prescribed in this document as well with the standards, the technical documents and the applicable professional standards. Any orders placed will be subject to our General Terms and Conditions of Sale, available on request. The drawings and/or images are the exclusive property of Pam Building and are confidential. They must not be reproduced or disclosed to any third party without written consent. They may only be used for the purpose for which they were issued and are returnable on request.