

# ENSIGN SOIL

## Entry/ Terminal Venting Branch

### EF013

#### DESCRIPTION

The entry/terminal venting branch is a unique PAM fitting which allows a jointless vent entry connection from a main soil vent pipe to a vent pipe. It is also used to then terminate the vent pipe back into the SVP.

The entry/terminal venting branch also enables the two stack types to be placed closer together therefore saving space in a riser.

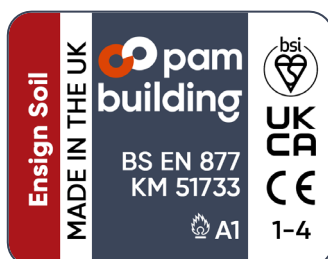
#### RECOMMENDED USE

- Domestic use
- Wastewater
- Rainwater
- Runoff water
- Hot effluents

#### STANDARDS & APPROVALS

- Industry product standard: BS EN 877
- Range fire classification: A1

#### IDENTIFICATION LABEL



#### MATERIALS & COATINGS

- Cast Iron
- Internally and externally coated red-brown, anti-corrosive epoxy powder coating, average thickness 150  $\mu\text{m}$  internally and 70  $\mu\text{m}$  externally

#### TECHNICAL FEATURES

- Hot water resistance: 24hr @ 95°C
- Thermal cycle resistance: 1500 cycles between 15°C and 93°C
- Chemical resistance for 2>ph>12
- Salt spray resistance internal coating: more than 350hrs.

#### ENVIRONMENTAL DATA

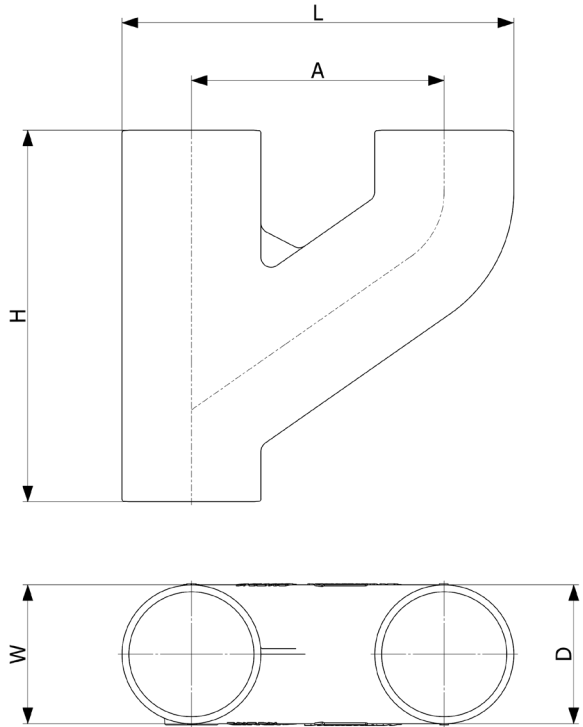
- Percentage of recycled Content: 99%
- Recycling information: Cast Iron is 100% recyclable through the existing recycling industrial network.

Data source: Environmental Product Declaration S-P-02190

# ENSIGN SOIL

## Entry/Terminal Venting Branch

**EF013**



DN	L	H	W	A	B	WEIGHT (KG)	PRODUCT CODE
100-50	234	210	110	150	58	3.2	279105
100-100	310	294	110	200	100	5.9	270303

This document is provided for information purposes, and our company reserves the right to modify the information contained herein at any time. Our company declines all responsibility of materials that do not comply with the rules prescribed in this document as well with the standards, the technical documents and the applicable professional standards. Any orders placed will be subject to our General Terms and Conditions of Sale, available on request. The drawings and/or images are the exclusive property of Pam Building and are confidential. They must not be reproduced or disclosed to any third party without written consent. They may only be used for the purpose for which they were issued and are returnable on request.