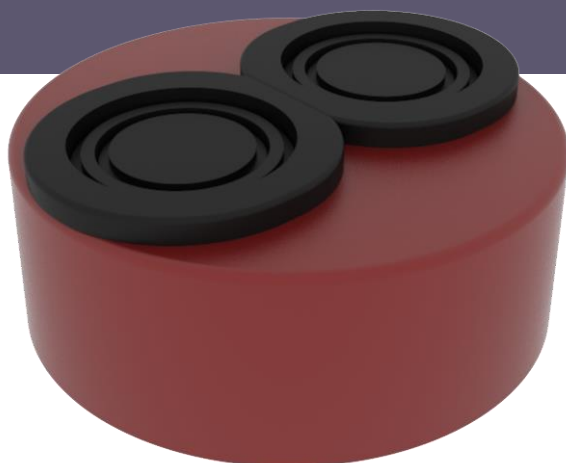


BLANK END WITH PUSH-FIT CONNECTOR ENSIGN SOIL EF077



DESCRIPTION

The blank end with waste push-fit connector has two rubber plugs to accommodate 38mm/32mm waste. It is suitable for push-fit connections to plastic or copper waste. Replacement plugs can be supplied upon request.

RECOMMENDED USE

- Domestic use
- Wastewater
- Rainwater
- Runoff water
- Hot effluents

STANDARDS & APPROVALS

- Industry product standard: BS EN 877
- Range fire classification: A1

IDENTIFICATION LABEL



MATERIALS & COATINGS

- Cast Iron
- Internally and externally coated red-brown, anti-corrosive epoxy powder coating, average thickness 150 µm internally and 70µm externally.
- 38mm Push fit connector/gasket
- 32mm Push fit connector/gasket

TECHNICAL FEATURES

- Hot water resistance: 24hr @ 95°C
- Thermal cycle resistance: 1500 cycles between 15°C and 93°C
- Chemical resistance for 2>ph>12
- Salt spray resistance internal coating: more than 350hrs.

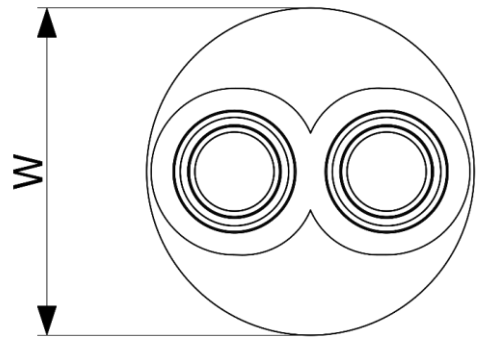
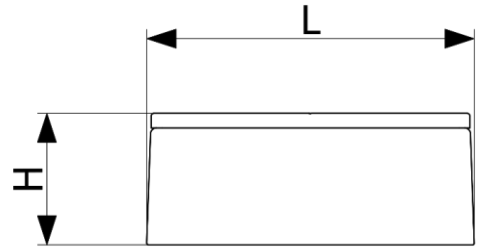
ENVIRONMENTAL DATA

- Percentage of recycled content: 99%
- Recycling information: Cast Iron is 100% recyclable through the existing recycling industrial network.

Data source: Environmental Product Declaration S-P-02190

BLANK END WITH PUSH-FIT CONNECTOR ENSIGN SOIL

EF077



DN	L	H	W	WEIGHT (KG)	PRODUCT CODE
100	110	50	110	0.4	191585

This document is provided for information purposes and our company reserves the right to modify the information contained herein at any time. Our company declines all responsibility of materials that do not comply with the rules prescribed in this document as well with the standards, the technical documents and the applicable professional standards. Any orders placed will be subject to our General Terms and Conditions of Sale, available on request. The drawings and/or images are the exclusive property of PAM Building and are confidential. They must not be reproduced or disclosed to any third party without written consent. They may only be used for the purpose for which they were issued and are returnable on request.