

# BRANCH TRAP ENSIGN SOIL EF080

## DESCRIPTION

The branch trap is designed to offer an inline trap within a system. With a top and side entry it can be used from a vertical to horizontal application also.

The trap is designed to eliminate bad odours within a system.

## RECOMMENDED USE

- Domestic use
- Wastewater
- Rainwater
- Runoff water
- Hot effluents

## STANDARDS & APPROVALS

- Industry product standard: BS EN 877
- Range fire classification: A1

## IDENTIFICATION LABEL



## MATERIALS & COATINGS

- Cast Iron
- Internally and externally coated red-brown, anti-corrosive epoxy powder coating, average thickness 150 µm internally and 70µm externally

## TECHNICAL FEATURES

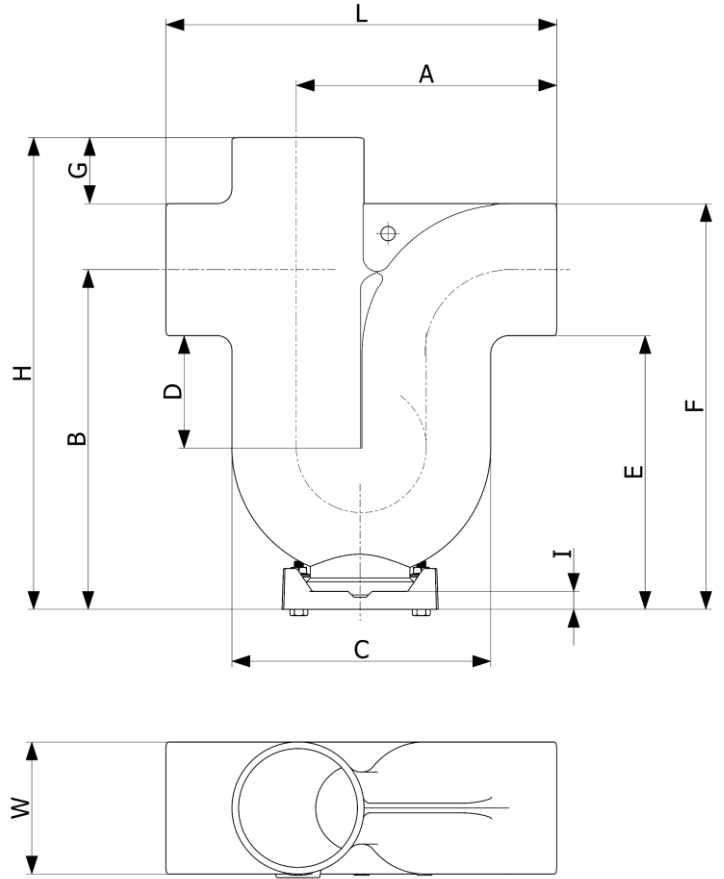
- Hot water resistance: 24hr @ 95°C
- Thermal cycle resistance: 1500 cycles between 15°C and 93°C
- Chemical resistance for 2>ph>12
- Salt spray resistance internal coating: more than 350hrs.

## ENVIRONMENTAL DATA

- Percentage of recycled content: 99%
- Recycling information: Cast Iron is 100% recyclable through the existing recycling industrial network.

Data source: Environmental Product Declaration S-P-02190

# BRANCH TRAP ENSIGN SOIL EF080



DN	L	H	W	A	B	C	D	E	F	G	I	WEIGHT (KG)	PRODUCT CODE
100	326	393	110	215	283	216	95	228	338	55	15	10.2	191587

This document is provided for information purposes and our company reserves the right to modify the information contained herein at any time. Our company declines all responsibility of materials that do not comply with the rules prescribed in this document as well with the standards, the technical documents and the applicable professional standards. Any orders placed will be subject to our General Terms and Conditions of Sale, available on request. The drawings and/or images are the exclusive property of PAM Building and are confidential. They must not be reproduced or disclosed to any third party without written consent. They may only be used for the purpose for which they were issued and are returnable on request.