



# DOUBLE OPPOSED BOSS PIPE ENSIGN SOIL EF091

## DESCRIPTION

The double opposed boss pipe offers two 50mm push-fit boss connections for connecting a SVP stack to waste connections mainly mid/low level waste. The 50mm push-fit bosses are designed to connect 50-54mm OD uPVC/HDPE/Copper waste connections.

This product is designed and conforms to the design guidance of BS EN 12056-2.

## RECOMMENDED USE

- Domestic use
- Wastewater
- Rainwater
- Runoff water
- Hot effluents

## STANDARDS & APPROVALS

- Industry product standard: BS EN 877
- Range fire classification: A1

## IDENTIFICATION LABEL



## MATERIALS & COATINGS

- Cast Iron
- Internally and externally coated red-brown, anti-corrosive epoxy powder coating, average thickness 150 µm internally and 70µm externally
- Zinc & Clear Mild Steel Hex Head Bolts (M8) with matching Nut
- Gasket: EPDM rubber EN 681

## TECHNICAL FEATURES

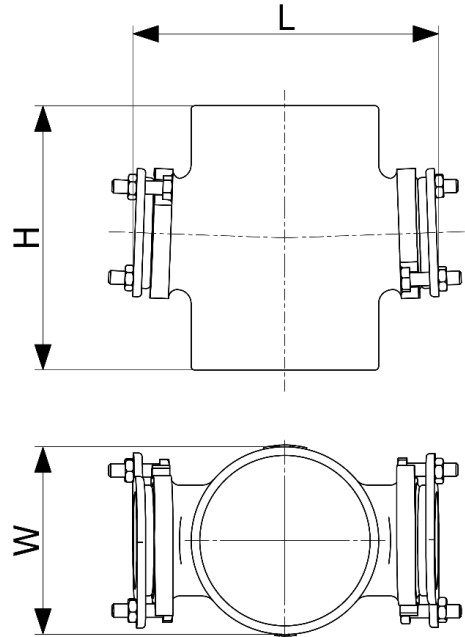
- Hot water resistance: 24hr @ 95°C
- Thermal cycle resistance: 1500 cycles between 15°C and 93°C
- Chemical resistance for 2>ph>12
- Salt spray resistance internal coating: more than 350hrs.

## ENVIRONMENTAL DATA

- Percentage of recycled content: 99%
- Recycling information: Cast Iron is 100% recyclable through the existing recycling industrial network.

**Data source: Environmental Product Declaration S-P-02190**

# DOUBLE OPPOSED BOSS PIPE ENSIGN SOIL EF091



DN	L	H	W	WEIGHT (KG)	PRODUCT CODE
100	178	155	110	2.7	156575
150	216	175	160	4.4	192359



- Plastic moulded protection caps EF093, are available for temporarily blanking off boss connection (10 pack). Product code: 192255



- O-Ring Gasket spares-kit (10 pack). Product code: 259491

This document is provided for information purposes and our company reserves the right to modify the information contained herein at any time. Our company declines all responsibility of materials that do not comply with the rules prescribed in this document as well with the standards, the technical documents and the applicable professional standards. Any orders placed will be subject to our General Terms and Conditions of Sale, available on request. The drawings and/or images are the exclusive property of PAM Building and are confidential. They must not be reproduced or disclosed to any third party without written consent. They may only be used for the purpose for which they were issued and are returnable on request.