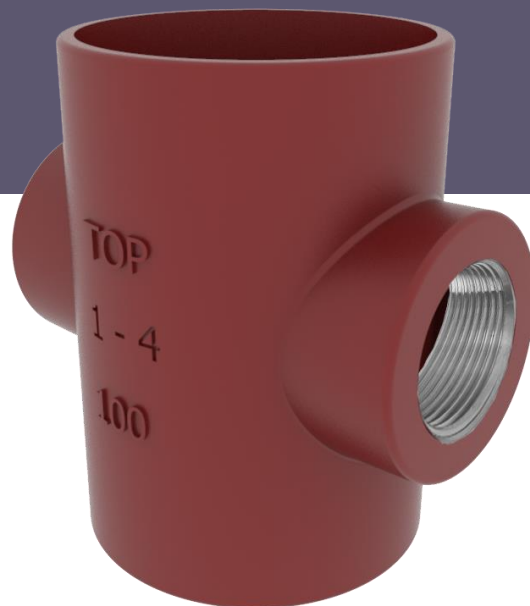


# DOUBLE OPPOSED BOSS PIPE ENSIGN SOIL EF091T



## DESCRIPTION

The double opposed boss pipe offers two 2" BSPT opposed bosses for connecting an SVP stack to waste connections, mainly mid/low level waste. The 2" boss is designed to connect to 2" BSPT uPVC/HDPE/Copper waste connections.

This product is designed and conforms to the design guidance of BS EN 12056-2.

## RECOMMENDED USE

- Domestic use
- Wastewater
- Rainwater
- Runoff water
- Hot effluents

## STANDARDS & APPROVALS

- Industry product standard: BS EN 877
- Range fire classification: A1

## IDENTIFICATION LABEL



## MATERIALS & COATINGS

- Cast Iron
- Internally and externally coated red-brown, anti-corrosive epoxy powder coating, average thickness 150 µm internally and 70µm externally

## TECHNICAL FEATURES

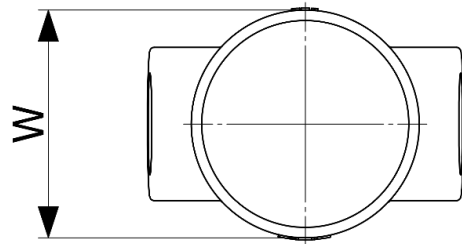
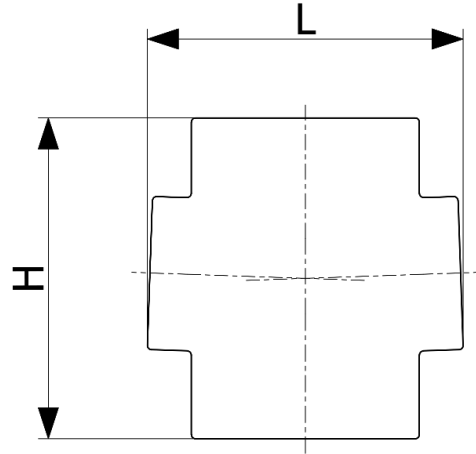
- Hot water resistance: 24hr @ 95°C
- Thermal cycle resistance: 1500 cycles between 15°C and 93°C
- Chemical resistance for 2>ph>12
- Salt spray resistance internal coating: more than 350hrs.

## ENVIRONMENTAL DATA

- Percentage of recycled content: 99%
- Recycling information: Cast Iron is 100% recyclable through the existing recycling industrial network.

**Data source: Environmental Product Declaration S-P-02190**

# DOUBLE OPPOSED BOSS PIPE ENSIGN SOIL EF091T



DN	L	H	W	WEIGHT (KG)	PRODUCT CODE
100	152	155	110	2.2	191848

This document is provided for information purposes and our company reserves the right to modify the information contained herein at any time. Our company declines all responsibility of materials that do not comply with the rules prescribed in this document as well with the standards, the technical documents and the applicable professional standards. Any orders placed will be subject to our General Terms and Conditions of Sale, available on request. The drawings and/or images are the exclusive property of PAM Building and are confidential. They must not be reproduced or disclosed to any third party without written consent. They may only be used for the purpose for which they were issued and are returnable on request.