

DOUBLE 90° BOSS PIPE ENSIGN SOIL EF092

DESCRIPTION

The double 90° boss pipe offers two 90° 50mm bosses for connecting a SVP stack to waste connections, mainly mid/low level waste. The 50mm boss is designed to connect 50-54mm uPVC/HDPE/Copper waste connections.

This product is designed and conforms to the design guidance of BS EN 12056-2.

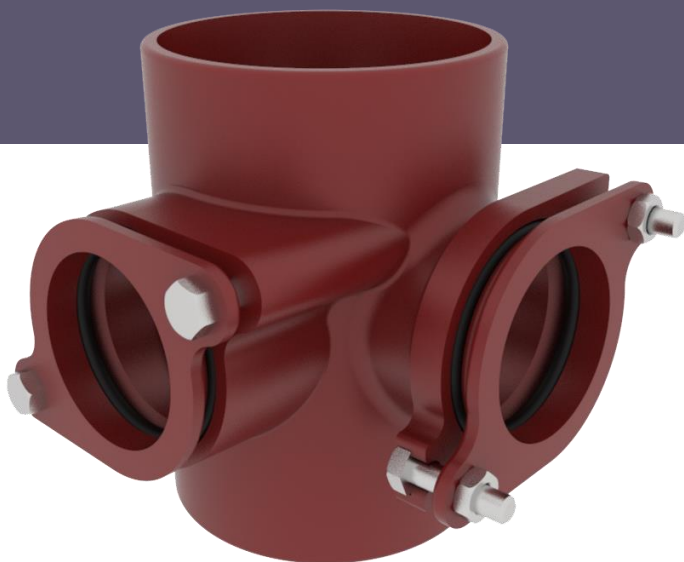
RECOMMENDED USE

- Domestic use
- Wastewater
- Rainwater
- Runoff water
- Hot effluents

STANDARDS & APPROVALS

- Industry product standard: BS EN 877
- Range fire classification: A1

IDENTIFICATION LABEL



MATERIALS & COATINGS

- Cast Iron
- Internally and externally coated red-brown, anti-corrosive epoxy powder coating, average thickness 150 µm internally and 70µm externally
- Gasket: EPDM rubber EN 681
- Zinc & Clear Mild Steel Hex Head Bolts (M8) with matching Nut

TECHNICAL FEATURES

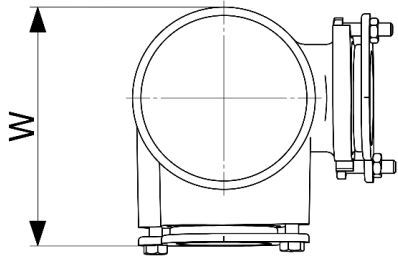
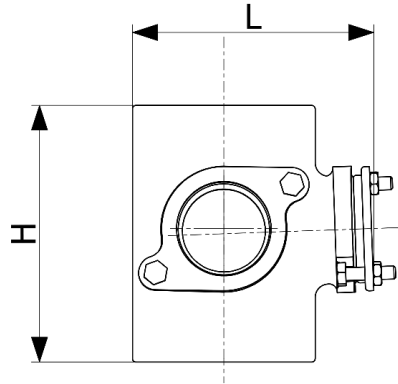
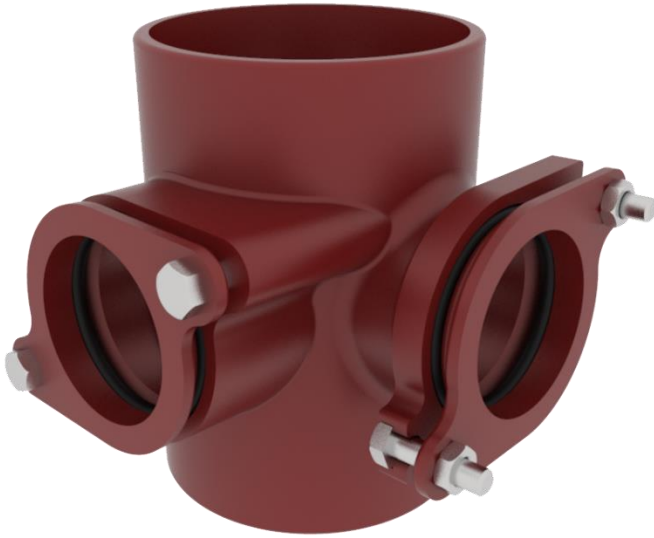
- Hot water resistance: 24hr @ 95°C
- Thermal cycle resistance: 1500 cycles between 15°C and 93°C
- Chemical resistance for 2>ph>12
- Salt spray resistance internal coating: more than 350hrs.

ENVIRONMENTAL DATA

- Percentage of recycled content: 99%
- Recycling information: Cast Iron is 100% recyclable through the existing recycling industrial network.

Data source: Environmental Product Declaration S-P-02190

DOUBLE 90° BOSS PIPE ENSIGN SOIL EF092



| DN | L | H | W | WEIGHT (KG) | PRODUCT CODE |
|-----|-----|-----|-----|-------------|--------------|
| 100 | 150 | 155 | 150 | 2.9 | 191849 |



- Plastic moulded protection caps (10 pack) EF093, are available for temporarily blanking off boss connections. Product code: 192255
- O-Ring Gasket spares-kit (10 pack). Product code: 259491

This document is provided for information purposes and our company reserves the right to modify the information contained herein at any time. Our company declines all responsibility of materials that do not comply with the rules prescribed in this document as well with the standards, the technical documents and the applicable professional standards. Any orders placed will be subject to our General Terms and Conditions of Sale, available on request. The drawings and/or images are the exclusive property of PAM Building and are confidential. They must not be reproduced or disclosed to any third party without written consent. They may only be used for the purpose for which they were issued and are returnable on request.